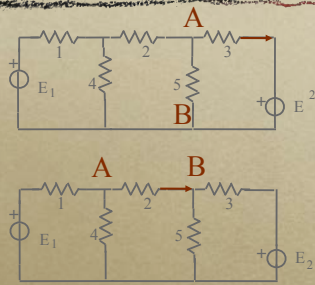


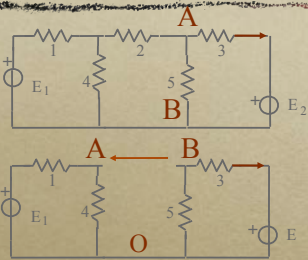
# Esercitazione 7

Esercizi: Teorema del generatore equ. di f.e.m.



- $R_1 = 4,5 \Omega;$
  - $R_2 = 10 \Omega;$
  - $R_3 = 15 \Omega;$
  - $R_4 = 35 \Omega;$
  - $R_5 = 200 \Omega;$
  - $E_1 = 290 \text{ V};$
  - $E_2 = 180 \text{ V}.$
- $I_2 = 3,20 \text{ A}.$

Esercizi: Teorema del generatore equ. di f.e.m.

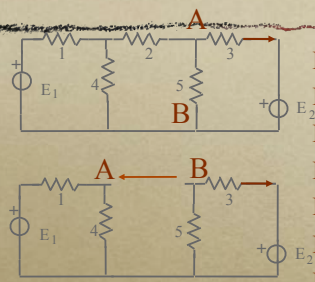


- $R_1 = 4,5 \Omega;$
  - $R_2 = 10 \Omega;$
  - $R_3 = 15 \Omega;$
  - $R_4 = 35 \Omega;$
  - $R_5 = 200 \Omega;$
  - $E_1 = 290 \text{ V};$
  - $E_2 = 180 \text{ V}.$
- $I_2 = 3,20 \text{ A}.$

$E'_0 = 256,96 \text{ V}; E''_0 = -167,44 \text{ V};$

Es. 6.0.1

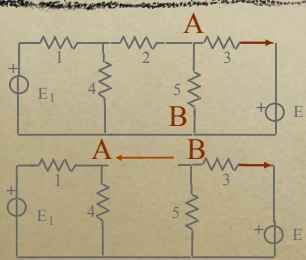
Esercizi: Teorema del generatore equ. di f.e.m.



- $R_1 = 4,5 \Omega;$
  - $R_2 = 10 \Omega;$
  - $R_3 = 15 \Omega;$
  - $R_4 = 35 \Omega;$
  - $R_5 = 200 \Omega;$
  - $E_1 = 290 \text{ V};$
  - $E_2 = 180 \text{ V}.$
- $I_2 = 3,20 \text{ A}.$

$E_0 = 89,52 \text{ V};$

Esercizi: Teorema del generatore equ. di f.e.m.



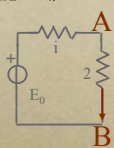
$R_1 = 4,5 \Omega;$   
 $R_2 = 10 \Omega;$   
 $R_3 = 15 \Omega;$   
 $R_4 = 35 \Omega;$   
 $R_5 = 200 \Omega;$   
 $E_1 = 290 \text{ V};$   
 $E_2 = 180 \text{ V}.$

$I_2 = 3,20 \text{ A}.$

$E_0 = 89,52 \text{ V}; R_i = 17,94 \Omega;$



Esercizi: Teorema del generatore equ. di f.e.m.



$R_1 = 4,5 \Omega;$   
 $R_2 = 10 \Omega;$   
 $R_3 = 15 \Omega;$   
 $R_4 = 35 \Omega;$   
 $R_5 = 200 \Omega;$   
 $E_1 = 290 \text{ V};$   
 $E_2 = 180 \text{ V}.$

$I_2 = 3,20 \text{ A}.$

$E_0 = 89,52 \text{ V};$   
 $R_i = 17,94 \Omega .$

